



Clarke Creek

WIND FARM

LACOUR

GOLDWIND

Industry Briefing

August 2021

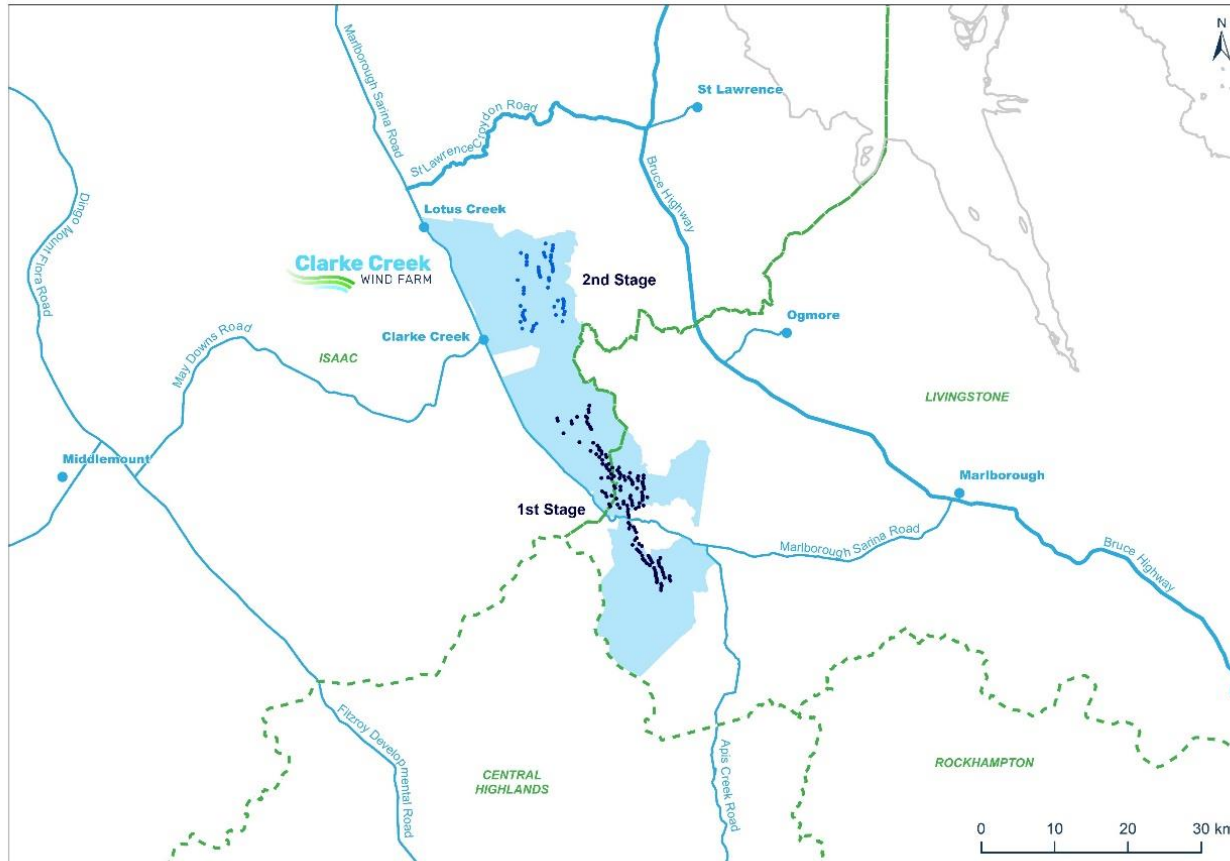
Project Director: Leigh Walters

Contents

1. Project Overview
2. Project Activities - Look Ahead
3. Project Structure - Delivery & Operations
4. Project Activities - Status
5. Recent site activity
6. Introduction to Main Contractors
7. Safety & Risk Management
8. Ongoing community and stakeholder engagement
9. Opportunities & Employment
10. Contact Details



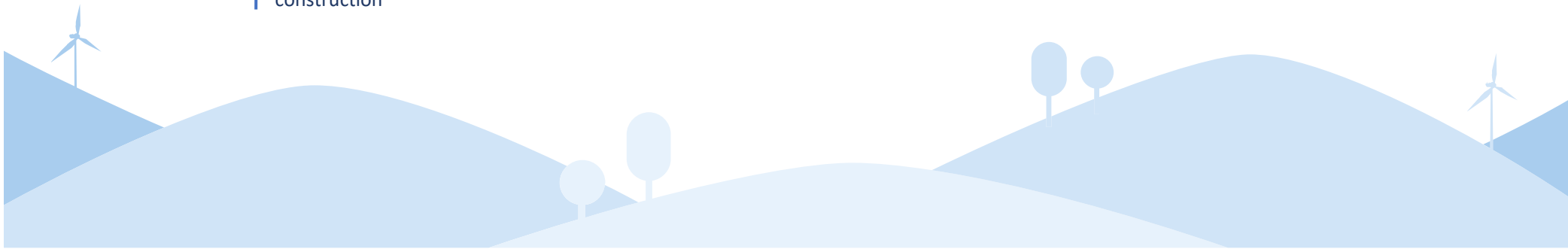
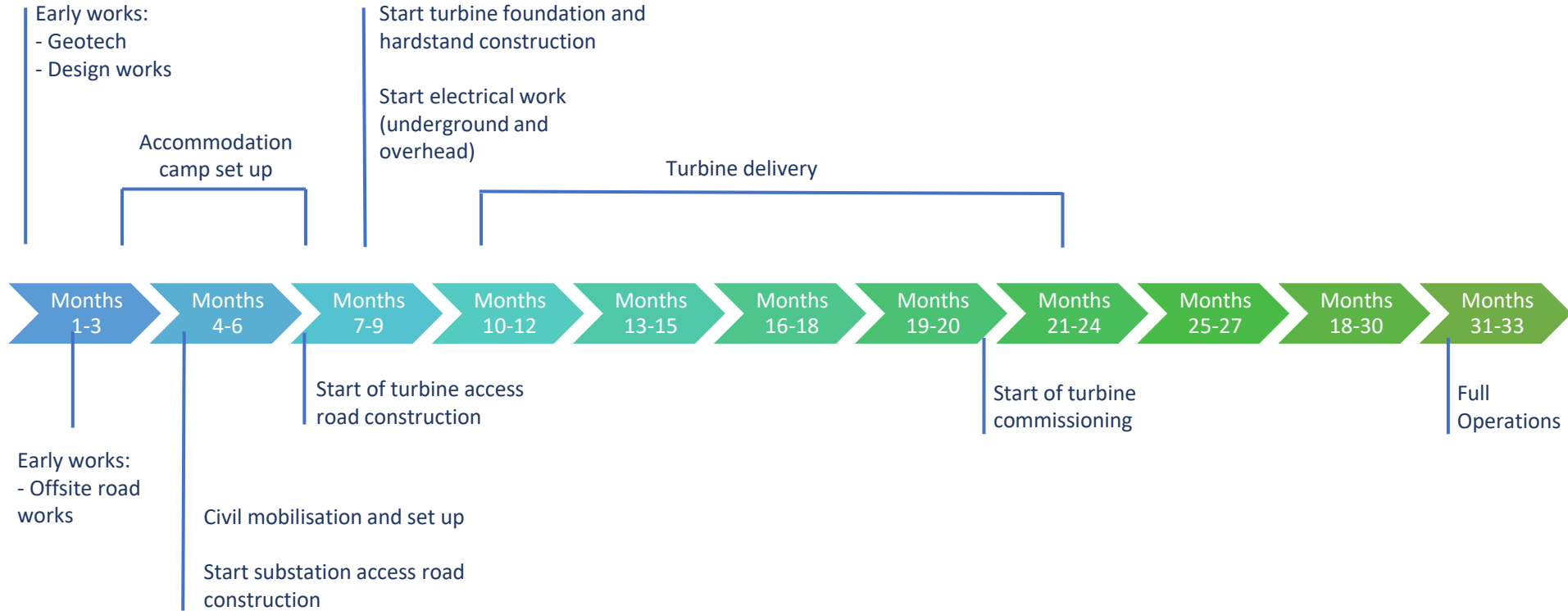
Clarke Creek Wind Farm Overview



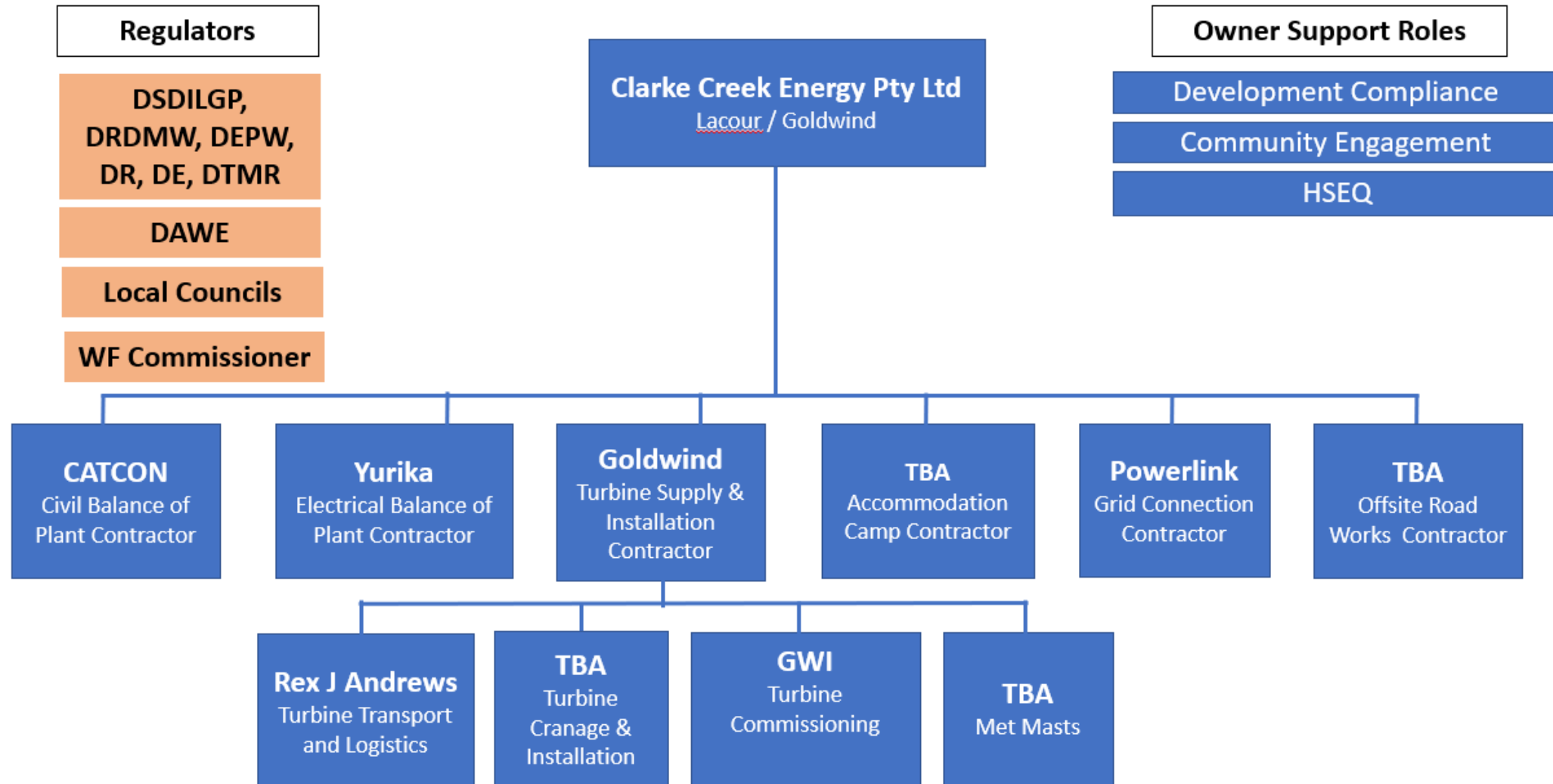
- Expected project size is:
 - Up to 195 turbines with output of approximately 800MW;
 - 400MW solar; and
 - battery storage.
- Total project investment ~\$1.5 billion.
- 1st Stage of the project:
 - 100-111 Goldwind turbines totaling 450-500MW
 - 346.5MW section supplying Stanwell Corporation under Power Purchase Agreement
- Working to prepare the project for construction.
- Aim to start early construction works, followed by full wind farm construction, in mid 2021.
- Estimated 350 jobs during construction period and 25 full time jobs during operations (25 years).

Project Activities - Look Ahead for 1st Stage

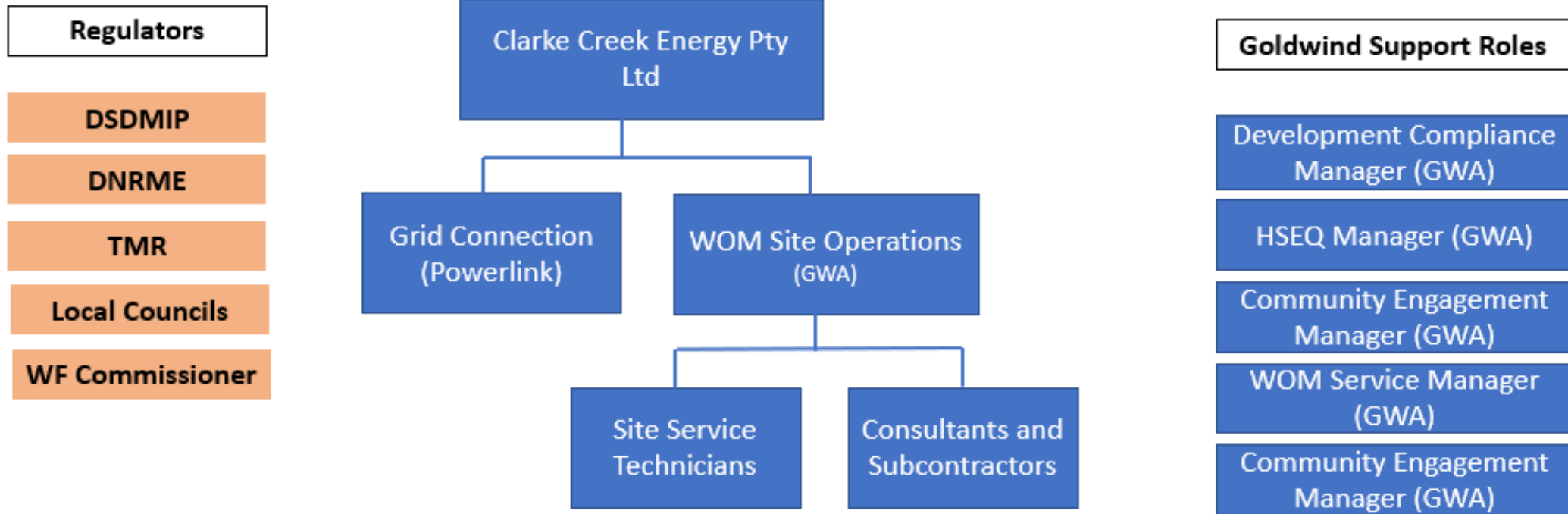
Indicative timeline, may change



Project Delivery Structure



Project Delivery Structure



CCWF Operations – Organisation Chart



Project Status

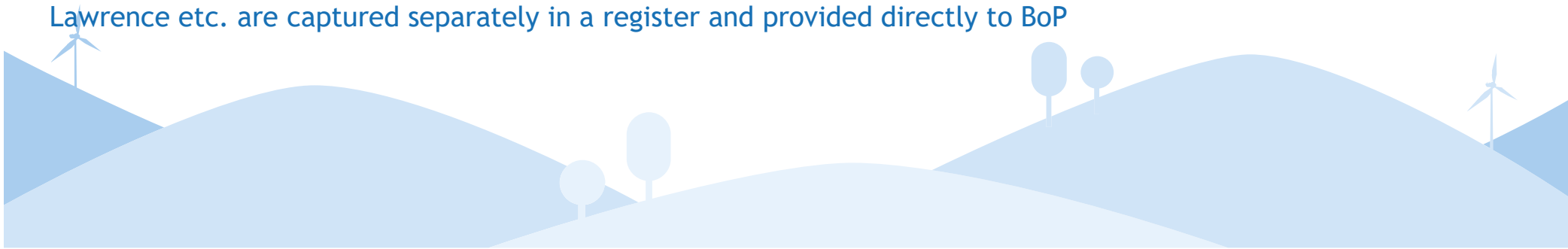
- 1st Stage (100-111 turbines, 450-500MW, southern section of the project)
 - The equity process is complex but we are progressing well and plan to make commitments to preliminary construction works over the next few months.
 - Goldwind will continue to be involved through a significant contribution towards construction, delivery and supply of turbines, and operation and maintenance of the wind farm.
 - Grid connection - technical planning and agreements progressing.
 - Offsite road works and upgrades - Traffic Impact Assessment is under review by Authorities. Working with DTMR and local councils to finalise approvals.
 - Preferred supplier status for Civil (CATCON) and Electrical Balance of Plant (Yurika), Synchronous Condenser (Siemens Energy) as well as Wind Turbine Supply and Install (Goldwind) contracts. Working to plan construction schedules etc.
 - Progressing other contracts (e.g. offsite road works and accommodation camp)
 - Enabling Works - Preparing various plans, secondary approvals and documents, Geotech investigations & survey necessary before start of construction, including Cultural Heritage and Environmental clearances.
- We will continue to manage and prepare for 2nd Stage of the project.

Local and Regional Business Engagement

- We have adapted the definitions of local supplier from the Queensland Procurement Policy 2021.
 - Local businesses - within 125km of 1st Stage turbines. Includes Marlborough and Rockhampton.
 - Regional businesses - within 125 - 250km of 1st Stage turbines. Includes Moranbah, Emerald, Gladstone and Mackay.
- We have had good engagement in the ICN process from local and regional businesses:

	% split
# of Local Businesses (within 125 km of 1 st Stage turbines includes Marlborough & Rockhampton)	14%
# of Regional Businesses (between 125 – 250 km of 1 st Stage turbines, includes Moranbah, Emerald, Gladstone and Mackay)	26%
# of Qld based businesses (more than 250km of 1 st Stage turbines)	25%
# of Aus wide businesses (not including Qld)	34%
Total Count	100%

- ICN Gateway continues to provides opportunities for businesses to register an interest in the project.
- Local skill sets and employment enquiries from the surrounding areas of Clarke Creek, Lotus Creek, Marlborough, St Lawrence etc. are captured separately in a register and provided directly to BoP



CCWF Recent Site Activity

- Multiple site visits to assist with equity process, design optimisation, contract tendering and Project Approvals compliance.
- Minor site maintenance including upkeep of existing access tracks and weed management.
- Cycad surveys.
- Aboriginal Cultural Heritage surveys (ongoing).



Contact Details

Contact Us

Phone: 1800 974 882

Email: info@clarkecreekwindandsolar.com.au

Post: Level 25, Tower 1, 100 Barangaroo Avenue,
Barangaroo Sydney NSW 2000.

Local Information Centre: 18 Railway Street,
Marlborough. Opening hours Fridays 9am - 1pm or by
appointment.

